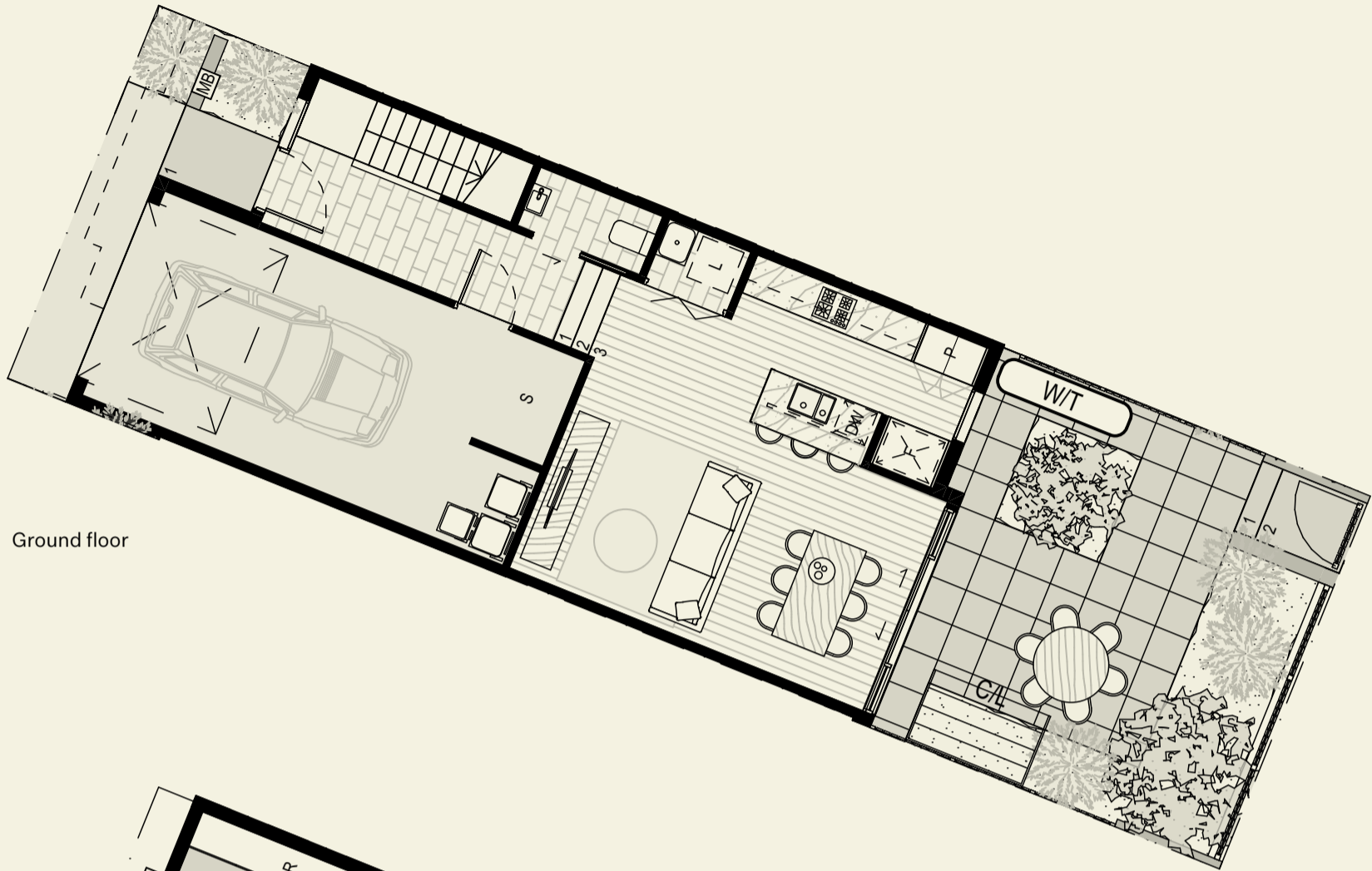


Townhome Type D

2 bedrooms & 2 bathrooms



Ground floor



First floor

Bedroom	2	Ground floor	56.1m ²
Bathroom	2	First floor	64.2m ²
Powder room	1	Garage	27.5m ²
Living	1	Driveway	3.9m ²
Garage car space	1	Front yard	6.5m ²
		Rear yard	39.1m ²
		Total	197.3m ²



Contact

thebottleworksgeelong.com.au